

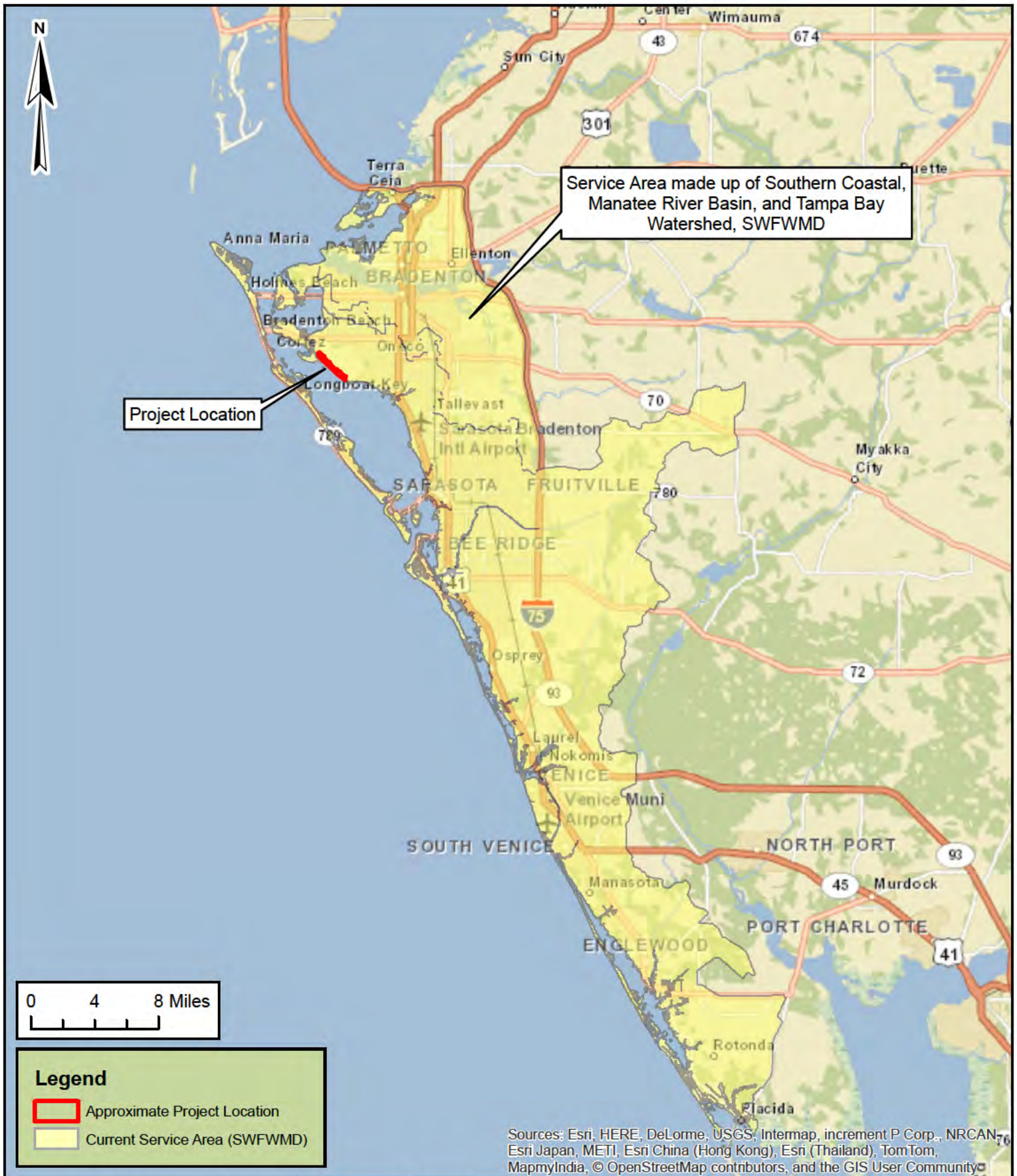
**Client:** Long Bar Pointe, LLLP

**Project:** Long Bar Pointe Mitigation Bank

**Title:** USGS Map



**Figure 2**  
Sec: 12,19 Twp: 35S Rng: 16E  
Sec: 7,17,18,20 Twp: 35S Rng: 17E  
Sec: 34 Twp: 33S Rng: 20E  
Scale: 1" = 2000'  
Date Drawn: 2/4/2016  
Drawn by: MJ



**Client: Long Bar Pointe, LLLP**

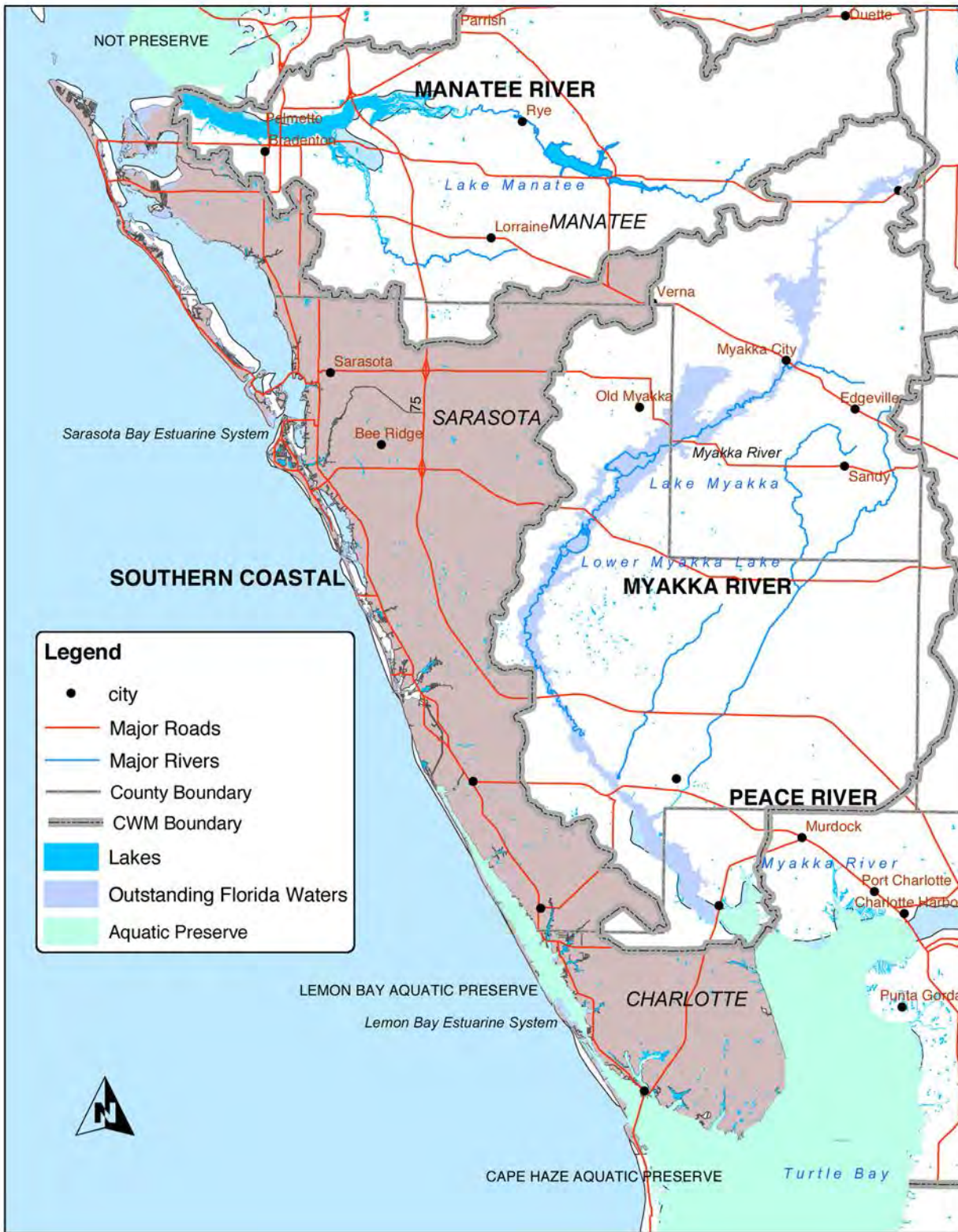
**Project: Long Bar Pointe Mitigation Bank**

**Title: Current Service Area Location Map**

**ECo**  
CONSULTANTS INCORPORATED  
1523 8th Avenue West, Suite B  
Palmetto, FL 34221  
Telephone: 941.722.0901  
Fax: 941.722.4931  
Website: [www.ecoconsultants.net](http://www.ecoconsultants.net)

**Figure 4**  
Sec: 12,19 Twp: 35S Rng: 16E  
Sec: 7,17,18,20 Twp: 35S Rng: 17E  
Scale: 1" = 8 Miles  
Date Drawn: 2/4/2016  
Drawn by: BT, MJ  
Source: ESRI World Street Map

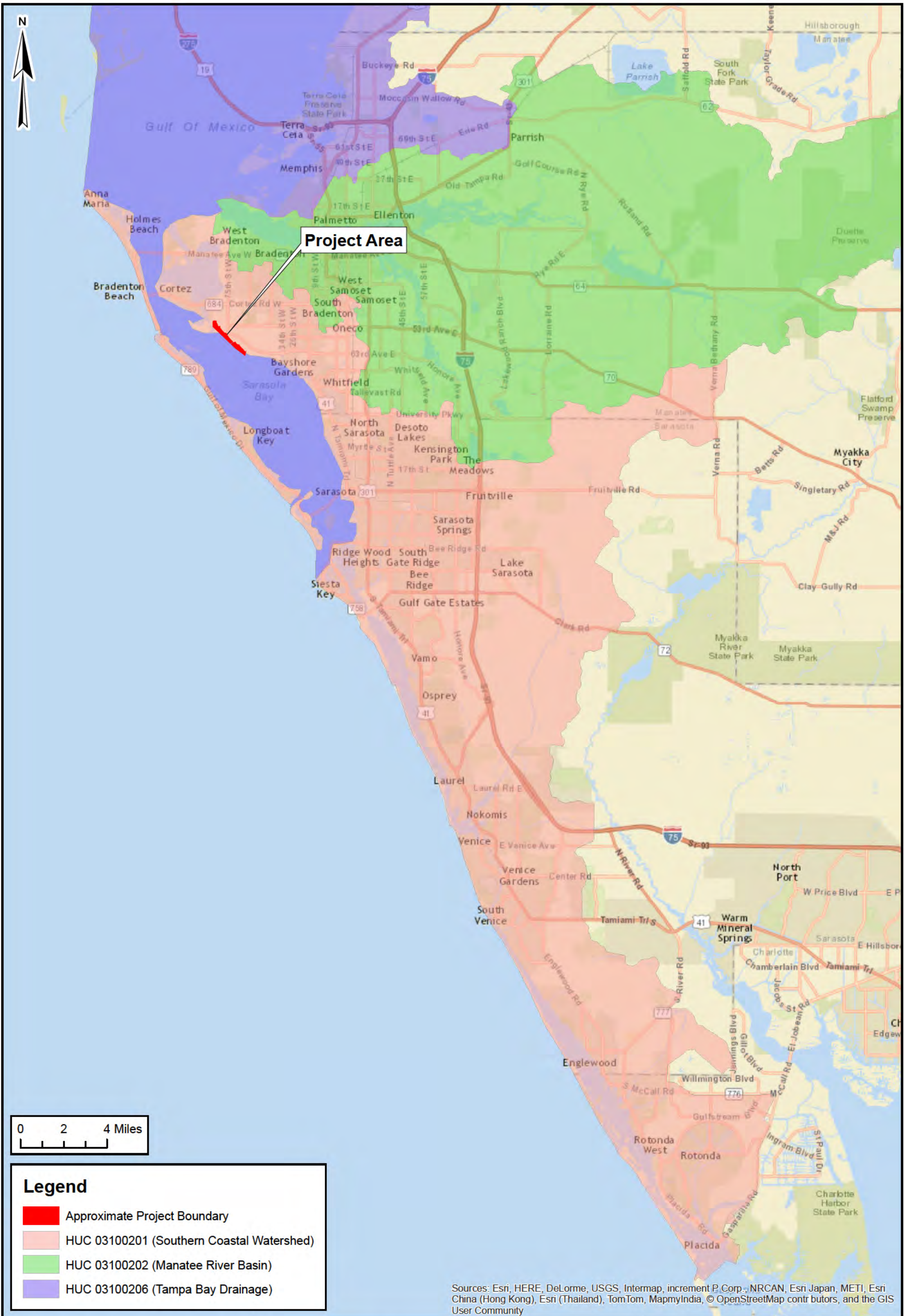
# Southern Coastal Watershed



Southern Coastal Watershed, n.d.

Southwest Florida Water Management District, (Brooksville, FL: Southwest Florida Water Management District, n.d.)

Downloaded from *Maps ETC*, on the web at <http://etc.usf.edu/maps> [map #f11713]



**Legend**

- Approximate Project Boundary
- HUC 03100201 (Southern Coastal Watershed)
- HUC 03100202 (Manatee River Basin)
- HUC 03100206 (Tampa Bay Drainage)

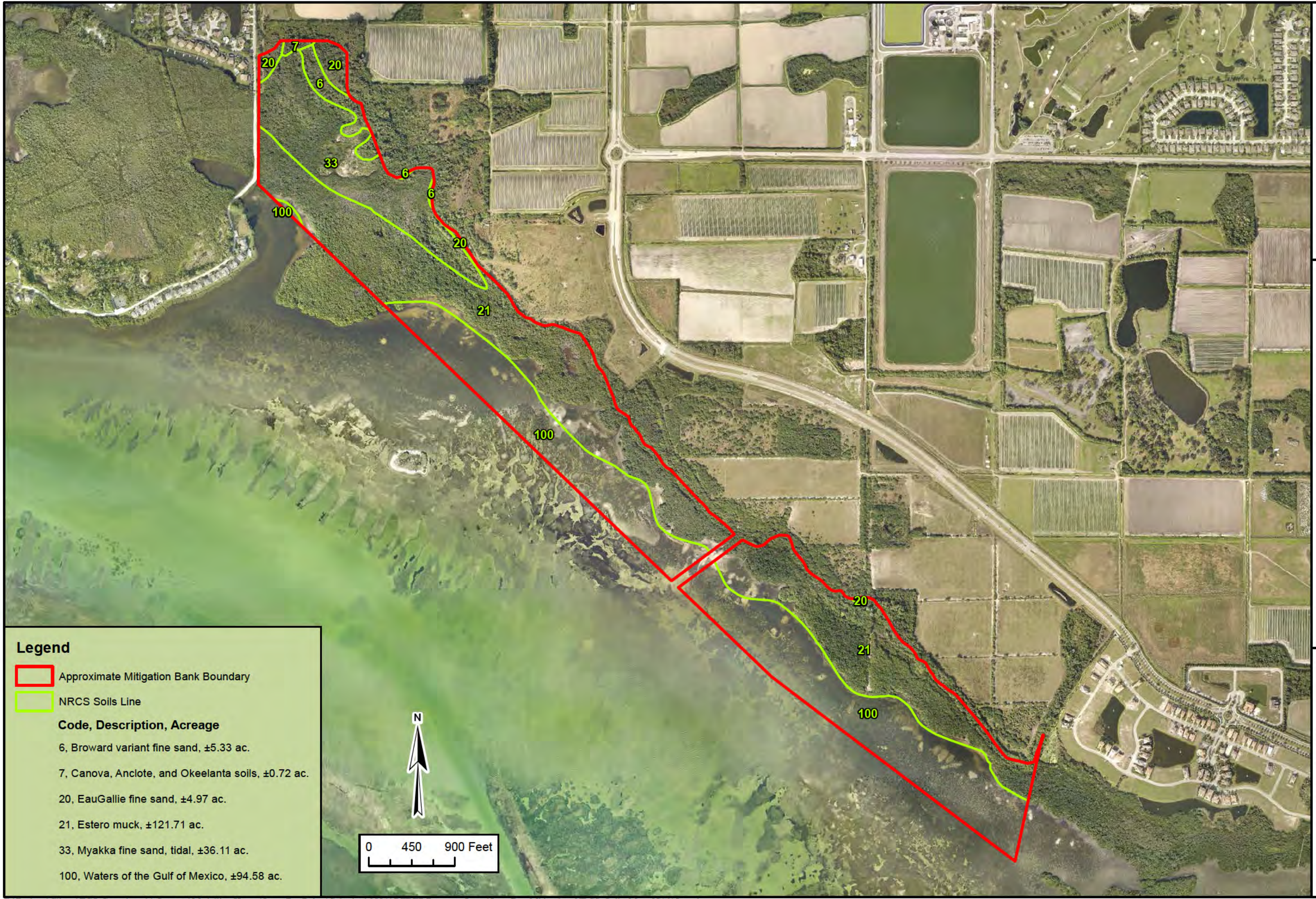
Sources: Esri, HERE, DeLorme, USGS, Intermap, increment P. Corp., NRCAN, Esri Japan, METI, Esri China (Hong Kong), Esri (Thailand), TomTom, MapnyIndia, © OpenStreetMap contributors, and the GIS User Community

**Client:** Long Bar Pointe, LLLP  
**Project:** Long Bar Pointe Mitigation Bank  
**Title:** Hydrologic Unit Classification Map



**1523 8th Avenue West, Suite B**  
**Palmetto, FL 34221**  
**Telephone: 941.722.0901**  
**Fax: 941.722.4931**  
**Website: www.ecoconsultants.net**

**Figure #12**  
 Sec: 12,19 Twp: 35S Rng: 16E  
 Sec: 7,17,18,20 Twp: 35S Rng: 17E  
 Scale: 1" = 4 mile  
 Date Drawn: 6/27/2016  
 Source: ESRI World Street Map, SWFWMD  
 Drawn by: MJ

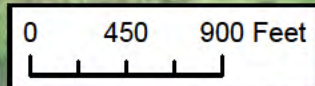


**Legend**

- Approximate Mitigation Bank Boundary
- NRCS Soils Line

**Code, Description, Acreage**

- 6, Broward variant fine sand, ±5.33 ac.
- 7, Canova, Anclote, and Okeelanta soils, ±0.72 ac.
- 20, EauGallie fine sand, ±4.97 ac.
- 21, Estero muck, ±121.71 ac.
- 33, Myakka fine sand, tidal, ±36.11 ac.
- 100, Waters of the Gulf of Mexico, ±94.58 ac.

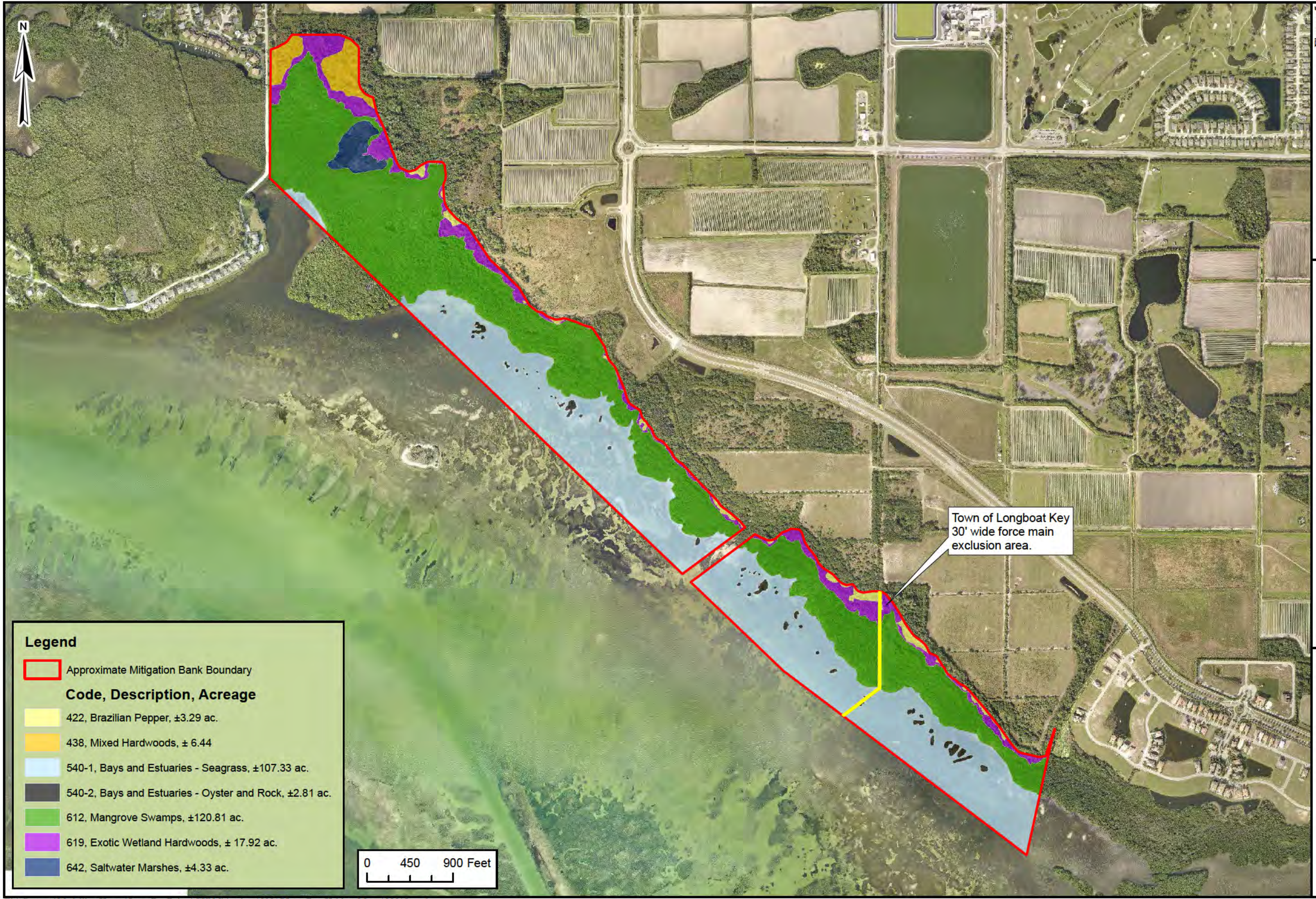


Attachment #  
 Sec: 12, 19 Twp: 35S Rng: 16E  
 Sec: 7, 17, 18, 20 Twp: 35S Rng: 17E  
 Scale: 1" = 900'  
 Date Drawn: 9/16/2015  
 Source: 2015 Manatee County Aerials

1523 8th Avenue West, Suite B  
 Palmetto, FL 34221  
 Telephone: 941.722.0901  
 Fax: 941.722.4931  
 Website: www.ecoconsultants.net

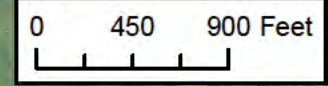


Client: Long Bar Pointe, LLLP  
 Project: Long Bar Pointe Mitigation Bank  
 Title: NRCS Soils Map



**Legend**

- Approximate Mitigation Bank Boundary
- Code, Description, Acreage**
- 422, Brazilian Pepper, ±3.29 ac.
- 438, Mixed Hardwoods, ± 6.44
- 540-1, Bays and Estuaries - Seagrass, ±107.33 ac.
- 540-2, Bays and Estuaries - Oyster and Rock, ±2.81 ac.
- 612, Mangrove Swamps, ±120.81 ac.
- 619, Exotic Wetland Hardwoods, ± 17.92 ac.
- 642, Saltwater Marshes, ±4.33 ac.



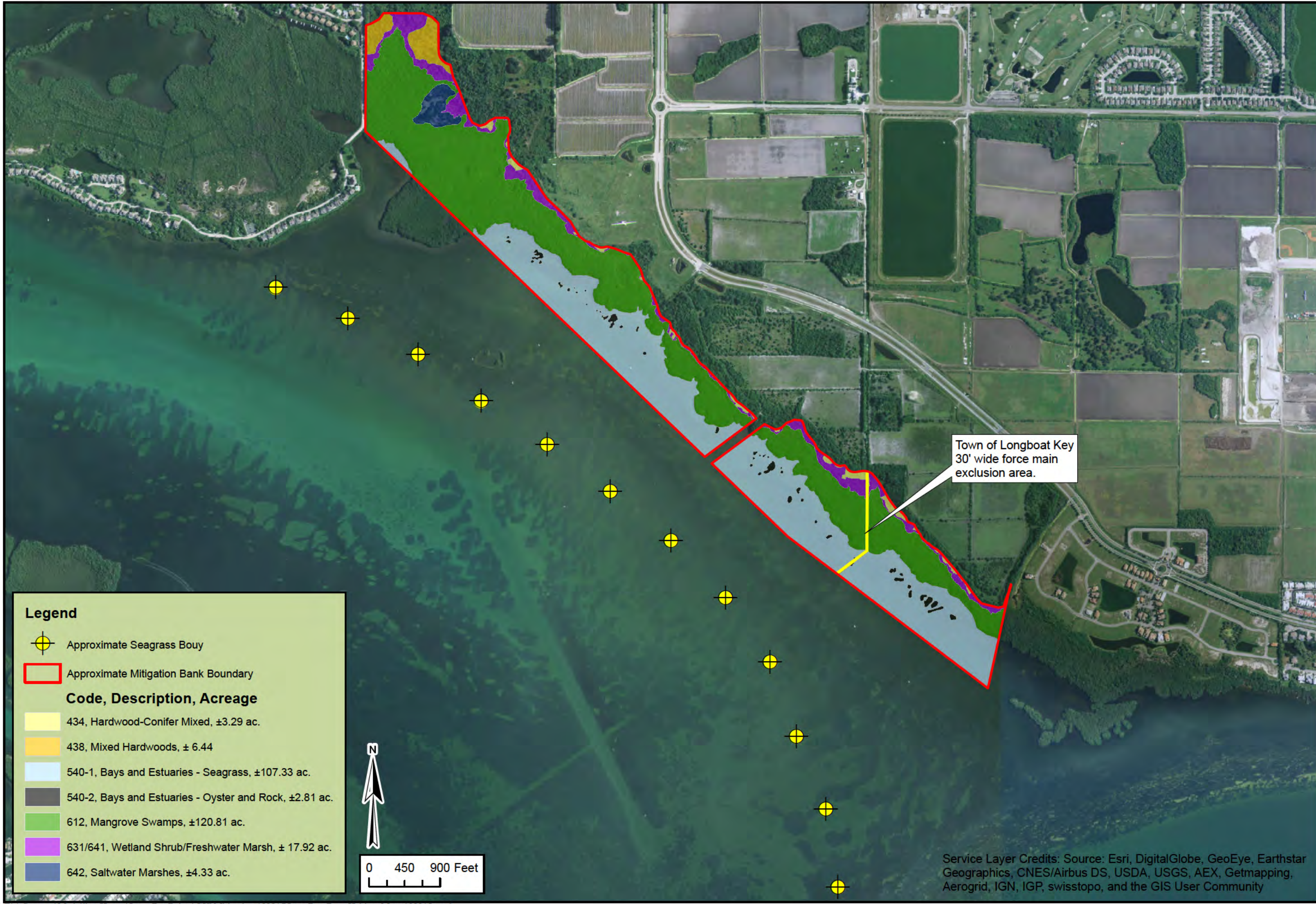
Town of Longboat Key  
30' wide force main  
exclusion area.

Figure 5  
 Sec: 12,19 Twp: 35S Rng: 16E  
 Sec: 7,17,18,20 Twp: 35S Rng: 17E  
 Sec: 34 Twp: 33S Rng: 20E  
 Scale: 1" = 900'  
 Date Drawn: 2/4/2016  
 Source: 2015 Manatee County Aerials

1523 8th Avenue West, Suite B  
 Palmetto, FL 34221  
 Telephone: 941.722.0901  
 Fax: 941.722.4931  
 Website: www.ecoconsultants.net



Client: Long Bar Pointe, LLLP  
 Project: Long Bar Pointe Mitigation Bank  
 Title: Existing FLUCCS Habitat Map

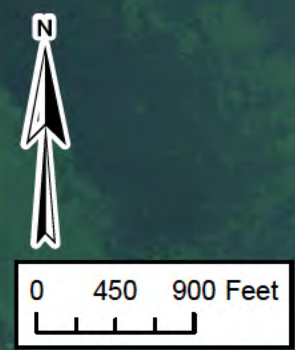


**Legend**

- Approximate Seagrass Bouy
- Approximate Mitigation Bank Boundary

**Code, Description, Acreage**

- 434, Hardwood-Conifer Mixed, ±3.29 ac.
- 438, Mixed Hardwoods, ± 6.44
- 540-1, Bays and Estuaries - Seagrass, ±107.33 ac.
- 540-2, Bays and Estuaries - Oyster and Rock, ±2.81 ac.
- 612, Mangrove Swamps, ±120.81 ac.
- 631/641, Wetland Shrub/Freshwater Marsh, ± 17.92 ac.
- 642, Saltwater Marshes, ±4.33 ac.



Town of Longboat Key  
30' wide force main  
exclusion area.

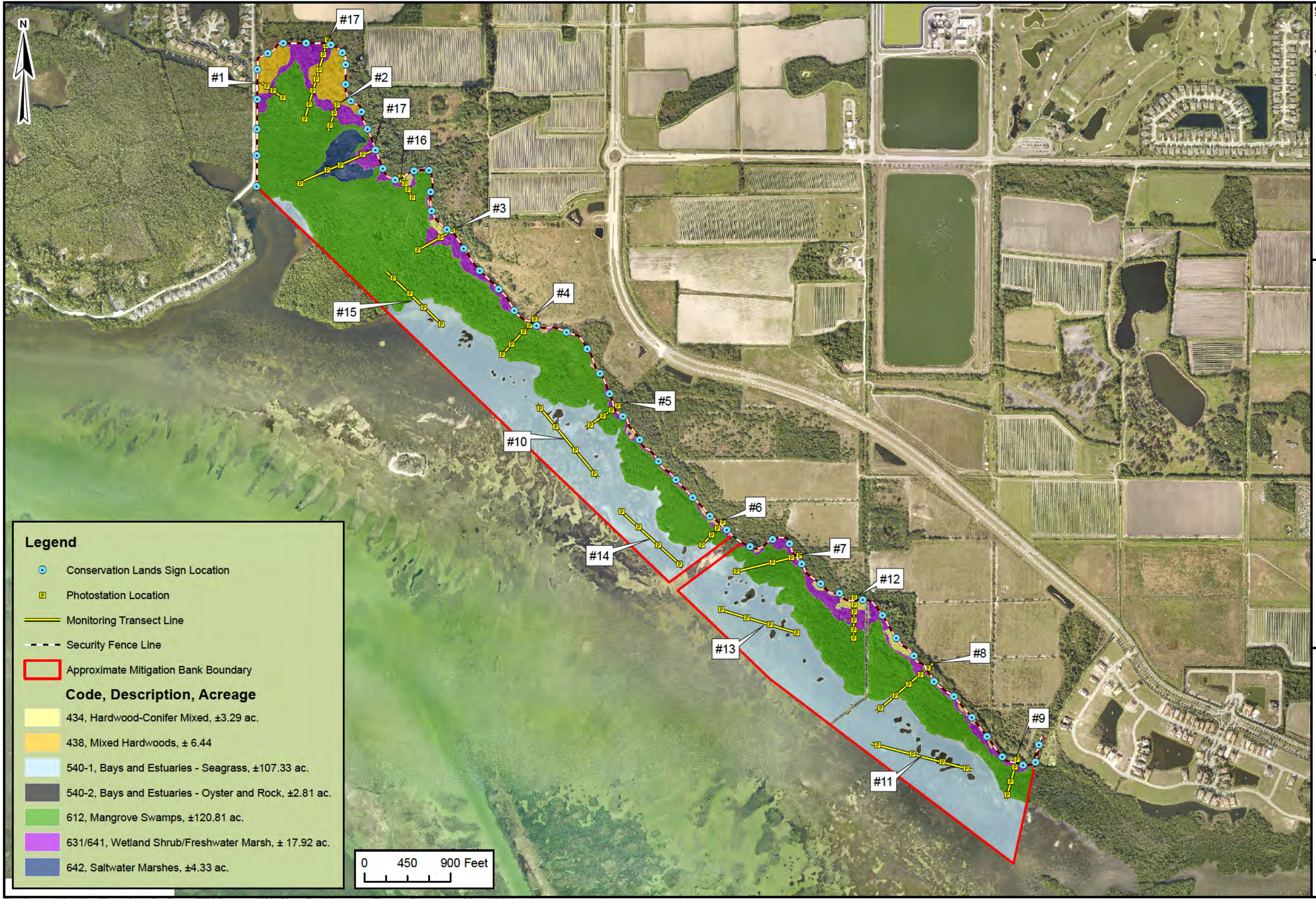
Service Layer Credits: Source: Esri, DigitalGlobe, GeoEye, Earthstar Geographics, CNES/Airbus DS, USDA, USGS, AEX, Getmapping, Aerogrid, IGN, IGP, swisstopo, and the GIS User Community

Attachment #1  
 Sec: 12,19 Twp: 35S Rng: 16E  
 Sec: 7,17,18,20 Twp: 35S Rng: 17E  
 Sec: 34 Twp: 33S Rng: 20E  
 Scale: 1" = 900'  
 Date Drawn: 2/17/2016  
 Source: ESRI World Imagery

15238th Avenue West, Suite B  
 Palmetto, FL 34221  
 Telephone: 941.722.0901  
 Fax: 941.722.4931  
 Website: www.ecoconsultants.net



Client: Long Bar Pointe, LLLP  
 Project: Long Bar Pointe Mitigation Bank  
 Title: Post Project Habitat Map

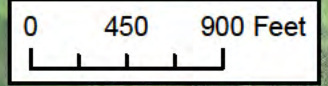


**Legend**

- Conservation Lands Sign Location
- Photostation Location
- Monitoring Transect Line
- - - Security Fence Line
- Approximate Mitigation Bank Boundary

**Code, Description, Acreage**

	434, Hardwood-Conifer Mixed, ±3.29 ac.
	438, Mixed Hardwoods, ± 6.44
	540-1, Bays and Estuaries - Seagrass, ±107.33 ac.
	540-2, Bays and Estuaries - Oyster and Rock, ±2.81 ac.
	612, Mangrove Swamps, ±120.81 ac.
	631/641, Wetland Shrub/Freshwater Marsh, ± 17.92 ac.
	642, Saltwater Marshes, ±4.33 ac.



Attachment #2  
 Sec: 12,19 Twp: 35S Rng: 16E  
 Sec: 7,17,18,20 Twp: 35S Rng: 17E  
 Sec: 34 Twp: 33S Rng: 20E  
 Scale: 1" = 900'  
 Date Drawn: 2/17/2016  
 Source: 2015 Manatee County Aerials

1523 8th Avenue West, Suite B  
 Palmetto, FL 34221  
 Telephone: 941.722.0901  
 Fax: 941.722.4931  
 Website: www.ecoconsultants.net



Client: Long Bar Pointe, LLLP  
 Project: Long Bar Pointe Mitigation Bank  
 Title: Monitoring Transect and Photostation Map